

All District 11 Regionals have different dynamics, which lends itself to different schedule considerations.

I'll created a table I developed noting what I call the [S/P] (Session/Player) ratio – these are the average number of individual sessions played by a person attending a Regional (Table Count in parens):

	Indianapolis	Evansville	Cincinnati	Dayton/Columbus	Lexington/Louisville
2008	5.67 (est.) (815)		5.45 (est.) (1222)	5.63 (est.) (1043)	6.65 (est.) (1225)
2009	5.42 (729)	6.46 (433)	5.41 (1068)	5.59 (1092)	6.70 (1378)
2010	6.03 (873)		5.31 (1183)	5.51 (1047)	6.48 (1290)
2011	5.55 (845)		4.74 (912)	5.46 (1084)	6.46 (1149)
2012	5.43 (748)	5.76 (432)	5.34 (1095)	5.41 (944)	6.71 (1316)
2013	5.32 (717)		5.47 (1176)	5.03 (843)	6.40 (1247)
2014	5.59 (773)		5.43 (1206)	5.05 (806)	6.33 (1252)
2015	5.53 (782)	6.31 (531)	5.83 (1144)	4.74 (739)	6.72 (1174)
2016	6.04 (939)		5.62 (1132)	5.10 (730)	6.38 (1087)
2017	5.99 (807)		5.24 (1129)*	5.23 (718)	6.46 (1021)
2018	6.28 (813)		6.10 (1187)	5.29 (671)	

* Does not include players or table count of On-Line Only game

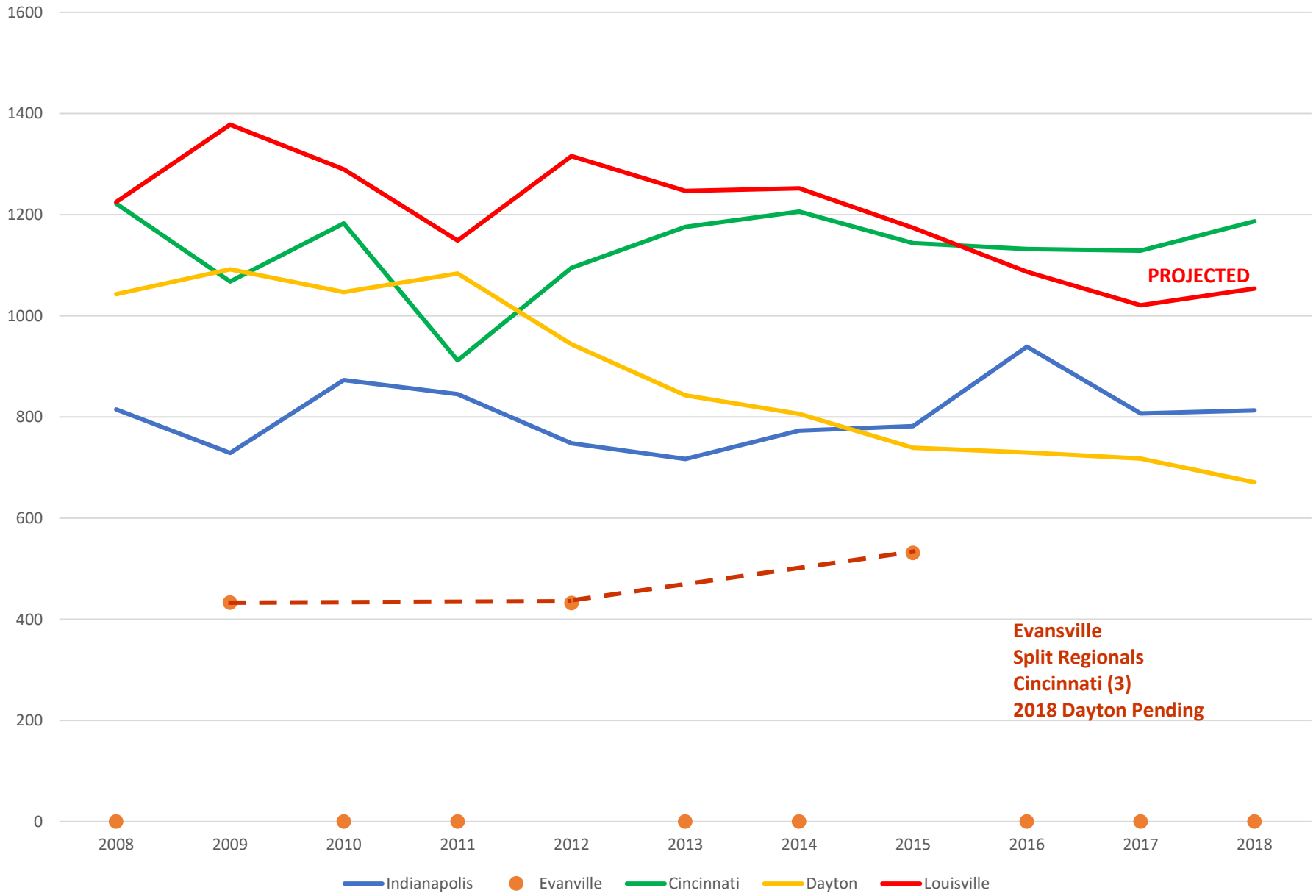
Essentially, the number is a measure of how "sticky" a tournament is: a higher number means that the typical player tends to stay and play more sessions -- they are "destination tournaments". Lower numbers are "commuter tournaments" -- players tend to drive in, play a session, and go home. You really want to this number to be as high as possible, as it's easier to get someone already attending a tournament to play an extra session than it is to get an additional person to attend. ¹

For comparison purposes, Gatlinburg comes in around 9.5 sessions/player most years, which definitely reflects its "destination tournament" character.

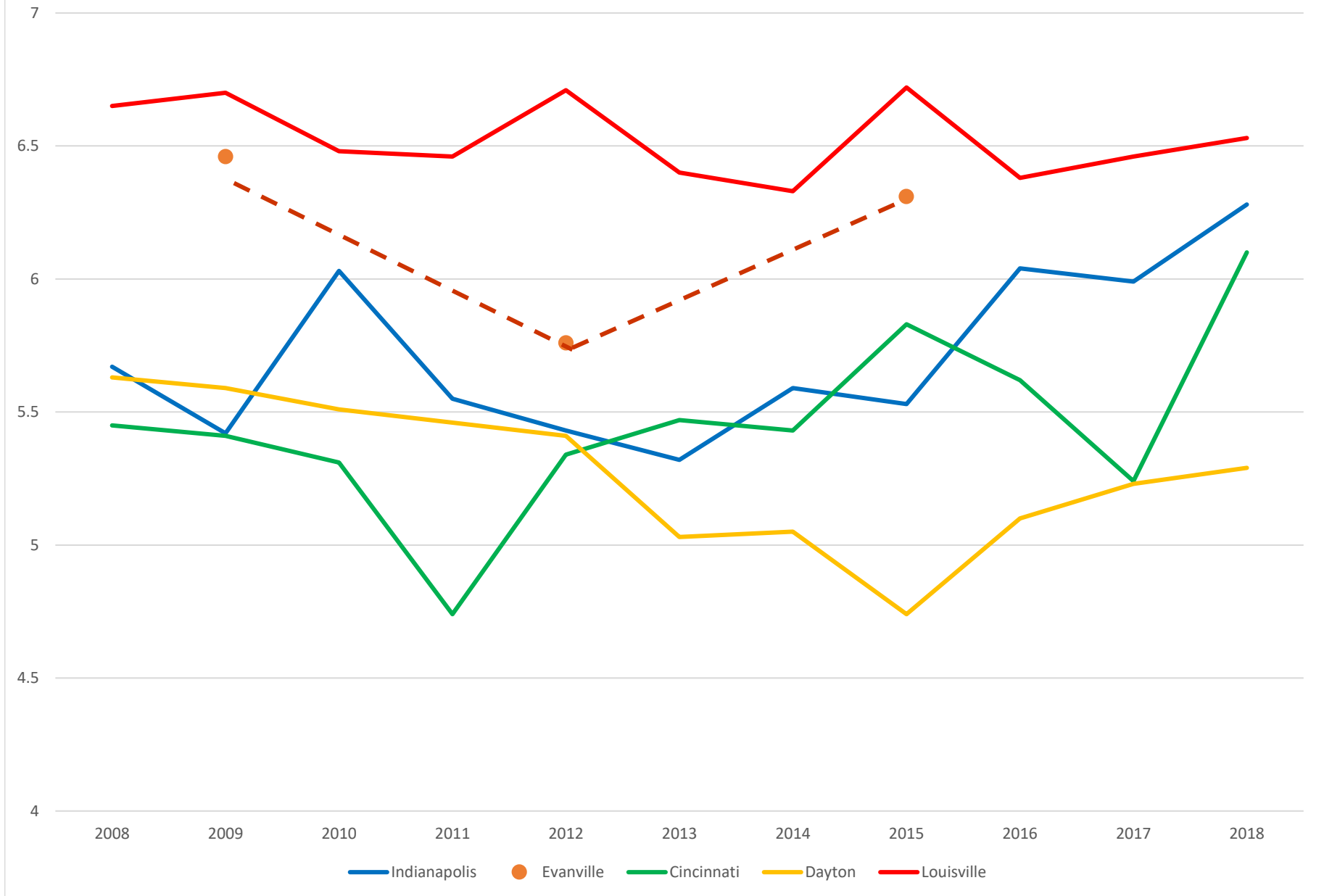
It's not entirely clear how one can use this information effectively, but it does reveal that Louisville/Lexington has historically been different from the other three, though the trends have converged over time. I don't know that this translates directly to a choice of schedule, but it is a data point.

¹ These numbers aren't really 100% accurate, as I estimated the number of players attending a tournament by multiplying the number of players receiving points, as indicated on the ACBL's tournament recap page, by a factor of 1.1. Every tournament has players who attend who don't earn any points, but the ACBL makes finding the total number difficult. I cross-checked several tournaments to see what this multiplier should be, and the range was 1.06-1.12.

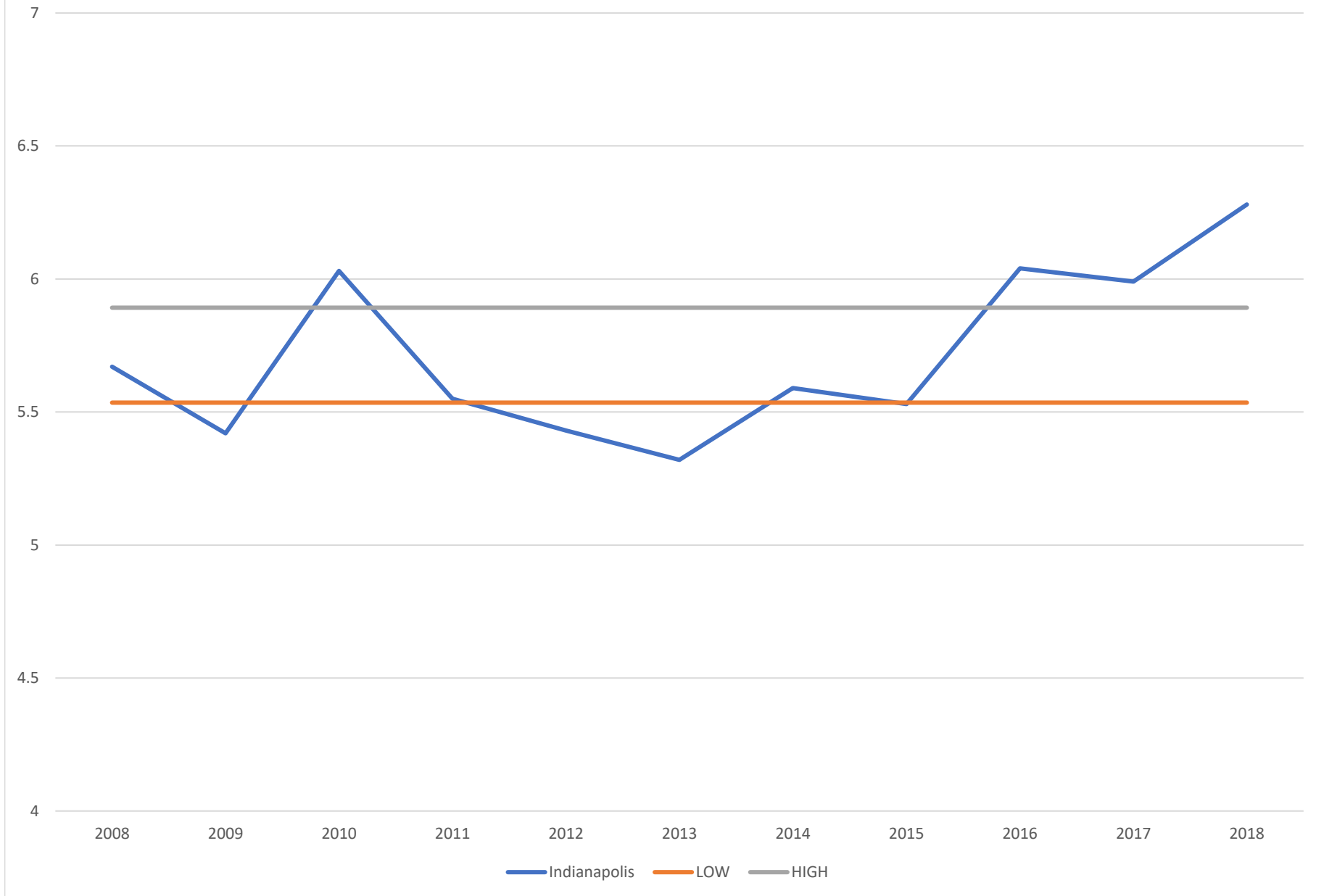
D11 Regional Table Counts



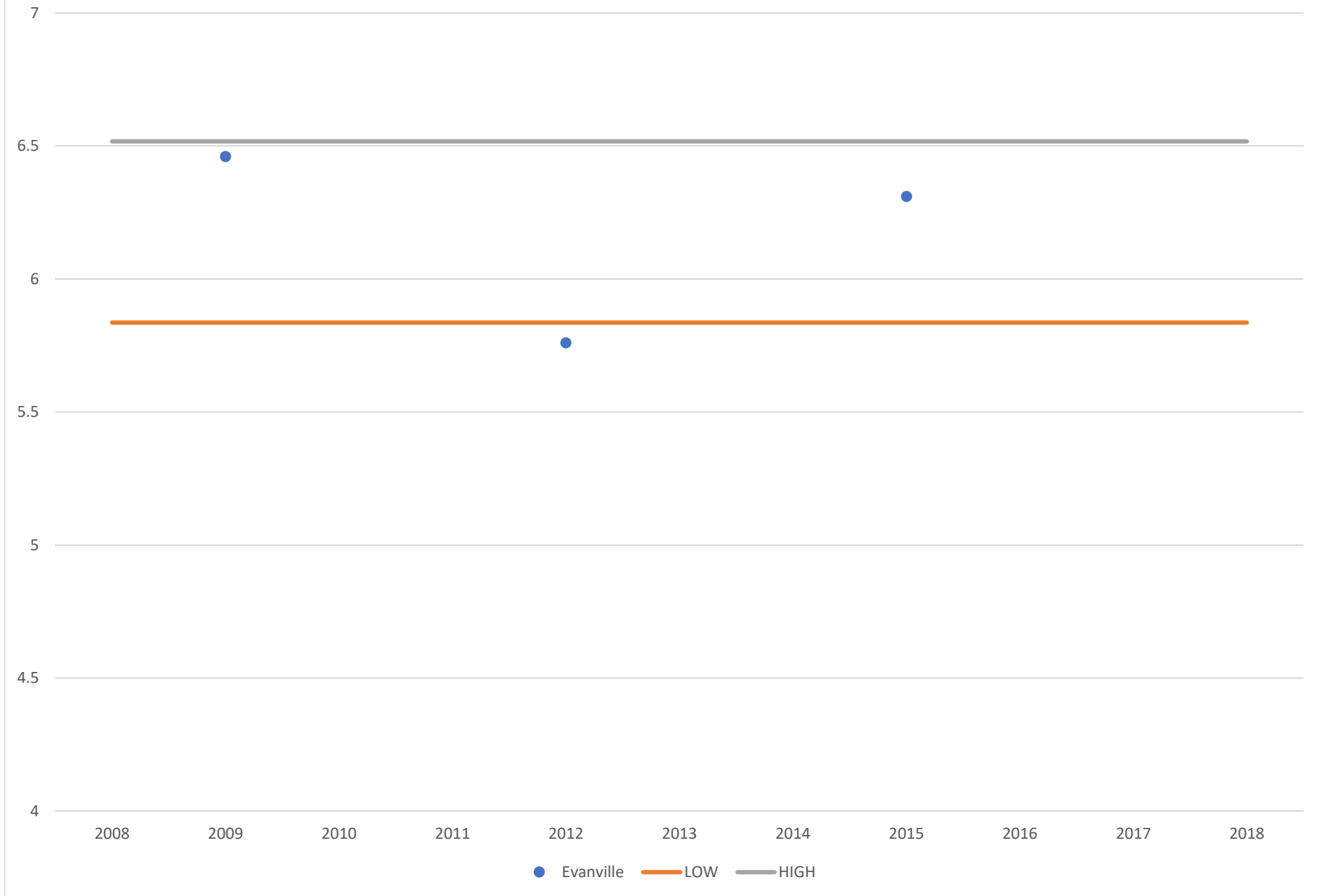
D11 Stickiness: Sessions per Player



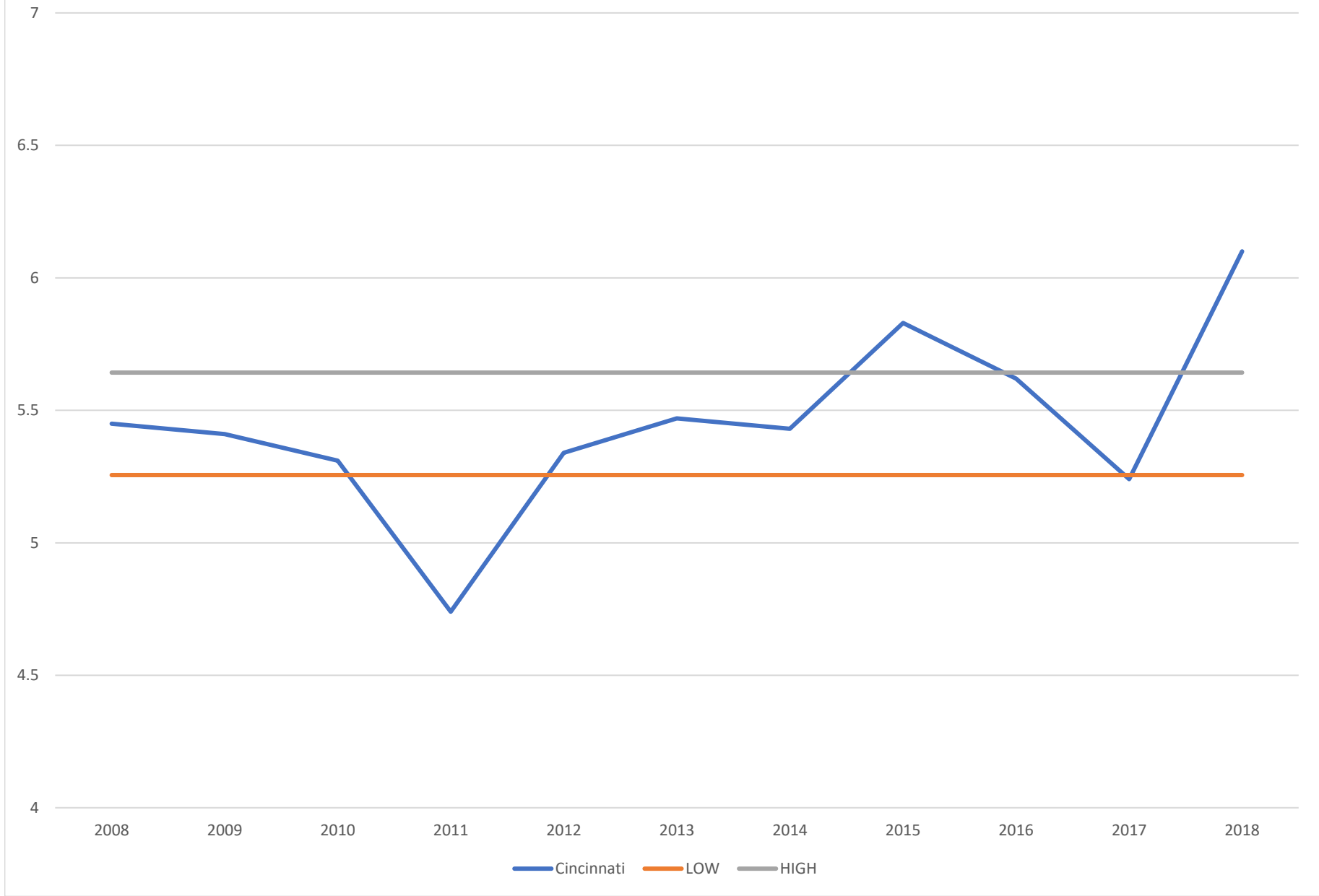
Indianapolis Regional Stickiness Trend Chart



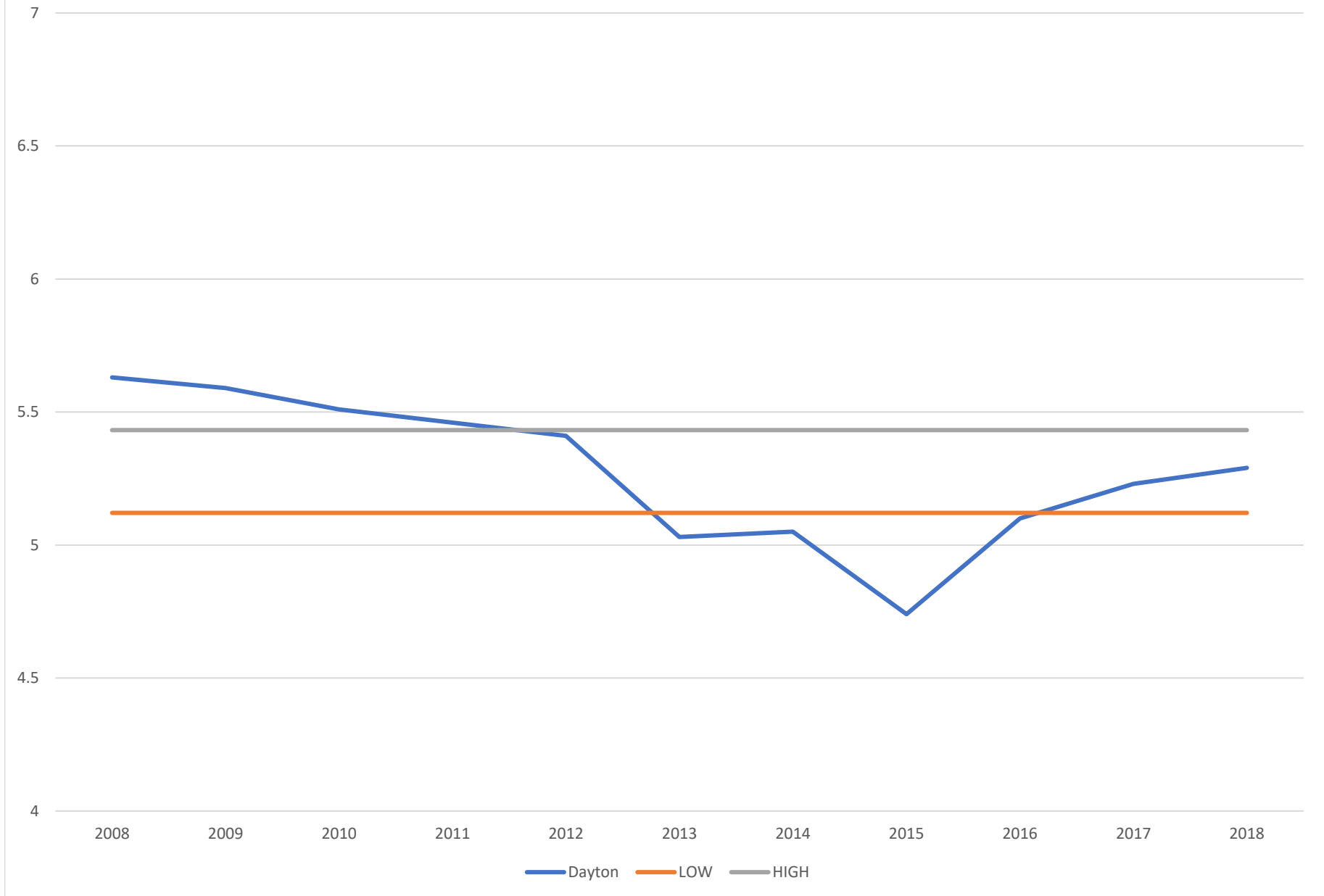
Evansville Split Regional Stickiness Trend Chart



Cincinnati Stickiness Trend Chart



Dayton Regional Stickiness Trend Chart



Louisville Stickiness Trend Chart

